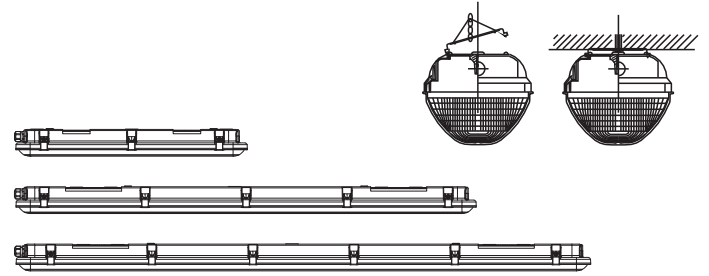
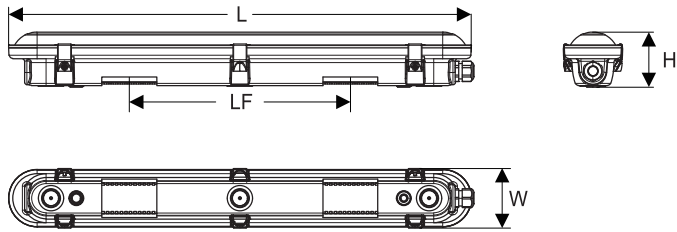


LED Waterproof Classic Performer G2

Version date 20-07-2023
www.opple.com



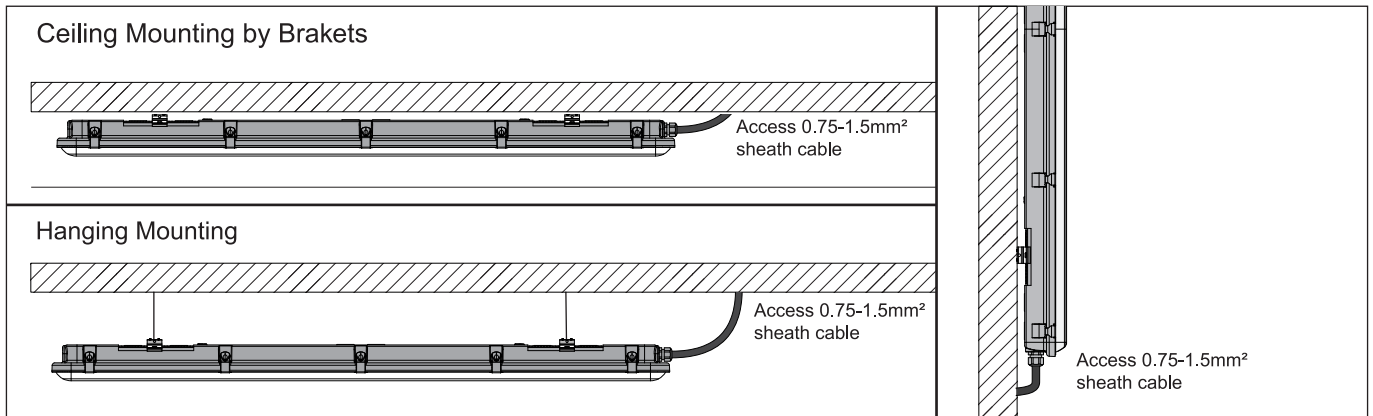
Type	CCT	Kg	L(mm)	W(mm)	H(mm)	LF(mm)	Rated Voltage	Frequency	Power Factor
WP-C2 L600	4000K	0.88	608	78	72	290	220-240V~	50/60Hz	0.95
WP-C2 L1200	4000K	1.56	1208	78	72	800	220-240V~	50/60Hz	0.95
WP-C2 L1500	4000K	1.88	1508	78	72	1060	220-240V~	50/60Hz	0.95

Item Code	Luminaire Description	Model	Rated Power	Max luminaires connected in line using external 1.5mm ² wire	Max luminaires connected in line using external 2.5mm ² wire	N	Energy Label	Light Source Code	QR Code
531000013000	LEDWP-CLA-P2 L600-10/18W-840	WP-C2 L600-10/18W-840	10/18W	15	24	1	C	LS076001815-01	
531000013600	LEDWP-CLA-P2 L600-18W-840-DALI	WP-C2 L600-10/18W-840-DALI	10/18W	15	24	1			
531000014200	LEDWP-CLA-P2 L600-18W-840-BLE2	WP-C2 L600-18W-840-BLE2	18W	15	24	1			
531000014800	LEDWP-CLA-P2 L600-10/18W-840-MD	WP-C2 L600-10/18W-840-MD	10/18W	15	24	1			
531000015400	LEDWP-CLA-P2 L600-10/18W-840-EM1	WP-C2 L600-10/18W-840-EM1	10/18W	15	24	1			
531000016000	LEDWP-CLA-P2 L600-18W-840-DALI-EM1	WP-C2 L600-18W-840-DALI-EM1	18W	15	24	1			
531000016600	LEDWP-CLA-P2 L600-18W-840-BLE2-EM1	WP-C2 L600-18W-840-BLE2-EM1	18W	15	24	1			
531000017200	LEDWP-CLA-P2 L600-10/18W-840-MD-EM1	WP-C2 L600-10/18W-840-MD-EM1	10/18W	15	24	1			
531000013100	LEDWP-CLA-P2 L1200-18W-840	WP-C2 L1200-18W-840	18W	15	24	1	C	LS076001815-02	
531000013700	LEDWP-CLA-P2 L1200-18W-840-DALI	WP-C2 L1200-18W-840-DALI	18W	15	24	1			
531000014300	LEDWP-CLA-P2 L1200-18W-840-BLE2	WP-C2 L1200-18W-840-BLE2	18W	15	24	1			
531000014900	LEDWP-CLA-P2 L1200-18W-840-MD	WP-C2 L1200-18W-840-MD	18W	15	24	1			
531000015500	LEDWP-CLA-P2 L1200-18W-840-EM3	WP-C2 L1200-18W-840-EM3	18W	15	24	1			
531000016100	LEDWP-CLA-P2 L1200-18W-840-DALI-EM3	WP-C2 L1200-18W-840-DALI-EM3	18W	15	24	1			
531000016700	LEDWP-CLA-P2 L1200-18W-840-BLE2-EM3	WP-C2 L1200-18W-840-BLE2-EM3	8W	15	24	1			
531000017300	LEDWP-CLA-P2 L1200-18W-840-MD-EM3	WP-C2 L1200-18W-840-MD-EM3	18W	15	24	1			
531000013200	LEDWP-CLA-P2 L1200-18/36W-840	WP-C2 L1200-18/36W-840	18/36W	10	15	1	C	LS076003615	
531000013800	LEDWP-CLA-P2 L1200-36W-840-DALI	WP-C2 L1200-36W-840-DALI	36W	10	15	1			
531000014400	LEDWP-CLA-P2 L1200-36W-840-BLE2	WP-C2 L1200-36W-840-BLE2	36W	10	15	1			
531000015000	LEDWP-CLA-P2 L1200-18/36W-840-MD	WP-C2 L1200-18/36W-840-MD	18/36W	10	15	1			
531000015600	LEDWP-CLA-P2 L1200-18/36W-840-EM3	WP-C2 L1200-18/36W-840-EM3	18/36W	10	15	1			
531000016200	LEDWP-CLA-P2 L1200-36W-840-DALI-EM3	WP-C2 L1200-36W-840-DALI-EM3	36W	10	15	1			
531000016800	LEDWP-CLA-P2 L1200-36W-840-BLE2-EM3	WP-C2 L1200-36W-840-BLE2-EM3	36W	10	15	1			
531000017400	LEDWP-CLA-P2 L1200-18/36W-840-MD-EM3	WP-C2 L1200-18/36W-840-MD-EM3	18/36W	10	15	1			
531000013300	LEDWP-CLA-P2 L1500-24W-840	WP-C2 L1500-24W-840	24W	15	24	1	C	LS076002415	
531000013900	LEDWP-CLA-P2 L1500-24W-840-DALI	WP-C2 L1500-24W-840-DALI	24W	15	24	1			
531000014500	LEDWP-CLA-P2 L1500-24W-840-BLE2	WP-C2 L1500-24W-840-BLE2	24W	15	24	1			
531000015100	LEDWP-CLA-P2 L1500-24W-840-MD	WP-C2 L1500-24W-840-MD	24W	15	24	1			
531000015700	LEDWP-CLA-P2 L1500-24W-840-EM3	WP-C2 L1500-24W-840-EM3	24W	15	24	1			
531000016300	LEDWP-CLA-P2 L1500-24W-840-DALI-EM3	WP-C2 L1500-24W-840-DALI-EM3	24W	15	24	1			
531000016900	LEDWP-CLA-P2 L1500-24W-840-BLE2-EM3	WP-C2 L1500-24W-840-BLE2-EM3	24W	15	24	1			
531000017500	LEDWP-CLA-P2 L1500-24W-840-MD-EM3	WP-C2 L1500-24W-840-MD-EM3	24W	15	24	1			
531000013400	LEDWP-CLA-P2 L1500-24/44W-840	WP-C2 L1500-24/44W-840	24/44W	10	15	1	C	LS076004415	
531000014000	LEDWP-CLA-P2 L1500-44W-840-DALI	WP-C2 L1500-44W-840-DALI	44W	10	15	1			
531000014600	LEDWP-CLA-P2 L1500-44W-840-BLE2	WP-C2 L1500-44W-840-BLE2	44W	10	15	1			
531000015200	LEDWP-CLA-P2 L1500-24/44W-840-MD	WP-C2 L1500-24/44W-840-MD	24/44W	10	15	1			
531000015800	LEDWP-CLA-P2 L1500-24/44W-840-EM3	WP-C2 L1500-24/44W-840-EM3	24/44W	10	15	1			
531000016400	LEDWP-CLA-P2 L1500-44W-840-DALI-EM3	WP-C2 L1500-44W-840-DALI-EM3	44W	10	15	1			
531000017000	LEDWP-CLA-P2 L1500-44W-840-BLE2-EM3	WP-C2 L1500-44W-840-BLE2-EM3	44W	10	15	1			
531000017600	LEDWP-CLA-P2 L1500-24/44W-840-MD-EM3	WP-C2 L1500-24/44W-840-MD-EM3	24/44W	10	15	1			
531000013500	LEDWP-CLA-P2 L1500-44/56W-840	WP-C2 L1500-44/56W-840	44/56W	10	15	1	C	LS076005515	
531000014100	LEDWP-CLA-P2 L1500-56W-840-DALI	WP-C2 L1500-44/56W-840-DALI	44/56W	10	15	1			
531000014700	LEDWP-CLA-P2 L1500-56W-840-BLE2	WP-C2 L1500-56W-840-BLE2	56W	10	15	1			
531000015300	LEDWP-CLA-P2 L1500-44/56W-840-MD	WP-C2 L1500-44/56W-840-MD	44/56W	10	15	1			
531000015900	LEDWP-CLA-P2 L1500-44/56W-840-EM3	WP-C2 L1500-44/56W-840-EM3	44/56W	10	15	1			
531000016500	LEDWP-CLA-P2 L1500-56W-840-DALI-EM3	WP-C2 L1500-56W-840-DALI-EM3	56W	10	15	1			
531000017100	LEDWP-CLA-P2 L1500-56W-840-BLE2-EM3	WP-C2 L1500-56W-840-BLE2-EM3	56W	10	15	1			
531000017700	LEDWP-CLA-P2 L1500-44/56W-840-MD-EM3	WP-C2 L1500-44/56W-840-MD-EM3	44/56W	10	15	1			

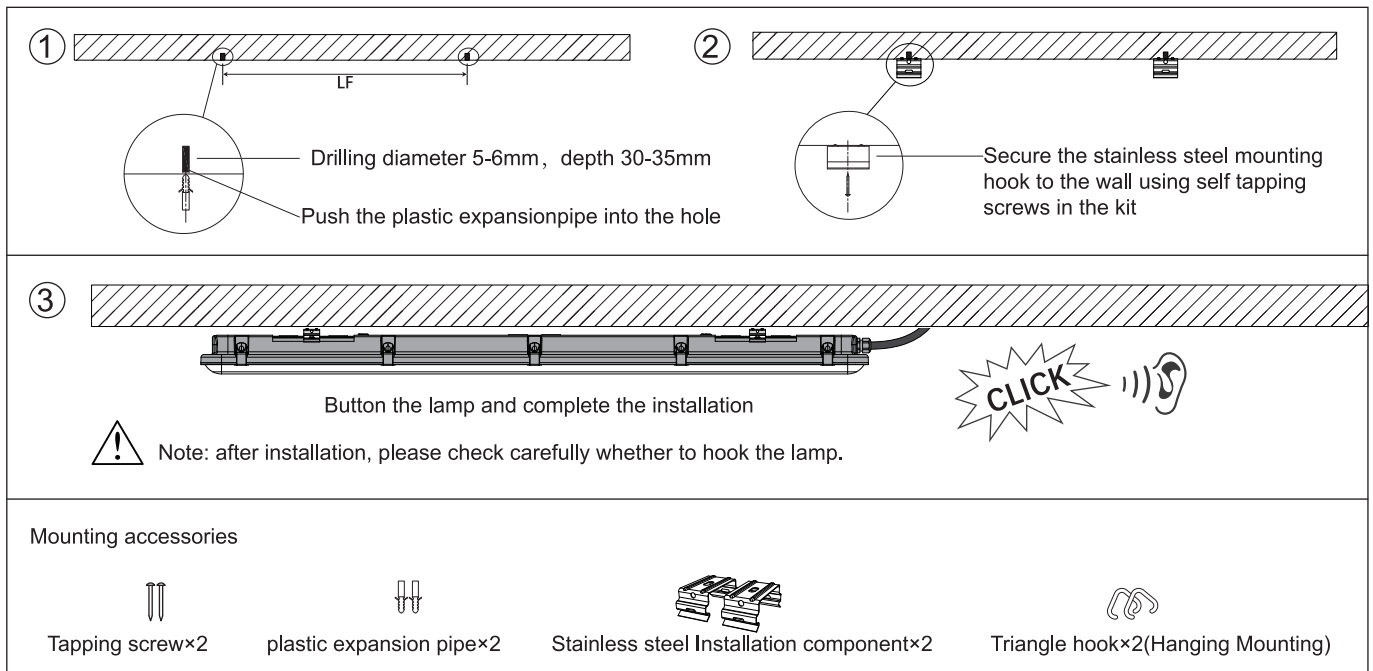
* This product contains a light source of energy efficiency class (C).

Installation

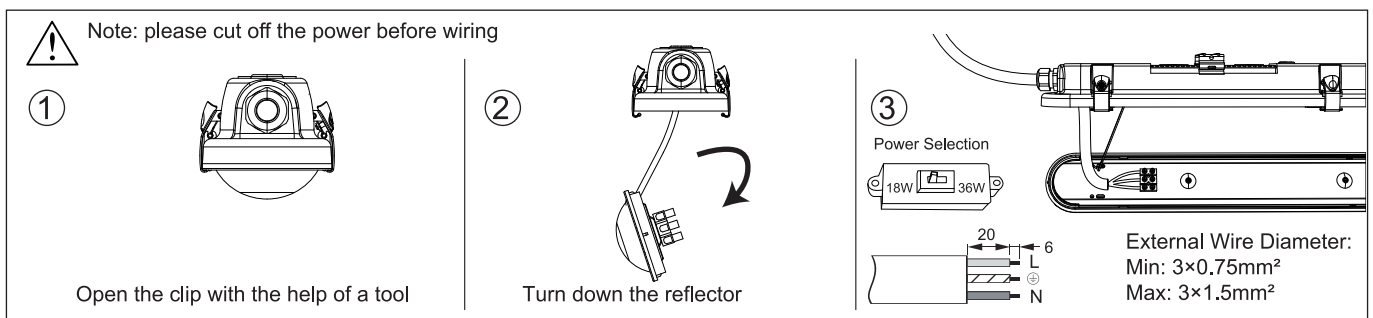
1. Installation Method



2. Installation Step



3. Wiring Method



4. Emergency

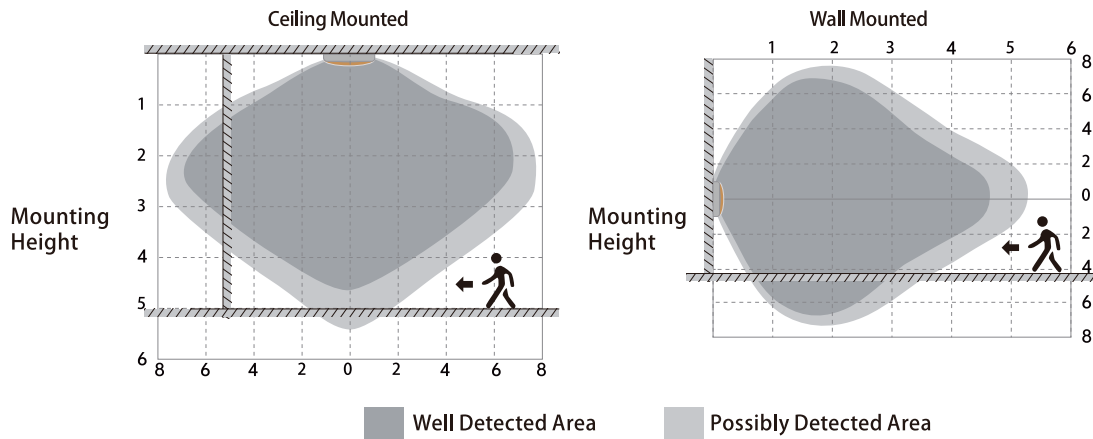
Indicator light is on during battery charging period
Press the testing button to switch to emergency mode
Indicator light will be extinguished in emergency mode.

Non Emergency: Empty
Emergency: External emergency power cord

Code	Model	Power	Battery	Lumen	Time
531000015400	WP-C2 L600-10/18W-840-EM1	10/18W	3.2V/2000mAh LiFePO4	375lm	1hrs
531000017200	WP-C2 L600-10/18W-840-MD-EM1	10/18W	3.2V/2000mAh LiFePO4	375lm	1hrs
531000015500	WP-C2 L1200-18W-840-EM3	18W	6.4V/3000mAh LiFePO4	750lm	3hrs
531000017300	WP-C2 L1200-18W-840-MD-EM3	18W	6.4V/3000mAh LiFePO4	750lm	3hrs
531000015600	WP-C2 L1200-18/36W-840-EM3	18/36W	6.4V/3000mAh LiFePO4	750lm	3hrs
531000017400	WP-C2 L1200-18/36W-840-MD-EM3	18/36W	6.4V/3000mAh LiFePO4	750lm	3hrs
531000015700	WP-C2 L1500-24W-840-EM3	24W	6.4V/3000mAh LiFePO4	750lm	3hrs
531000017500	WP-C2 L1500-24W-840-MD-EM3	24W	6.4V/3000mAh LiFePO4	750lm	3hrs
531000015800	WP-C2 L1500-24/44W-840-EM3	24/44W	6.4V/3000mAh LiFePO4	750lm	3hrs
531000017600	WP-C2 L1500-24/44W-840-MD-EM3	24/44W	6.4V/3000mAh LiFePO4	750lm	3hrs
531000015900	WP-C2 L1500-44/56W-840-EM3	44/56W	6.4V/3000mAh LiFePO4	750lm	3hrs
531000017700	WP-C2 L1500-44/56W-840-MD-EM3	44/56W	6.4V/3000mAh LiFePO4	750lm	3hrs

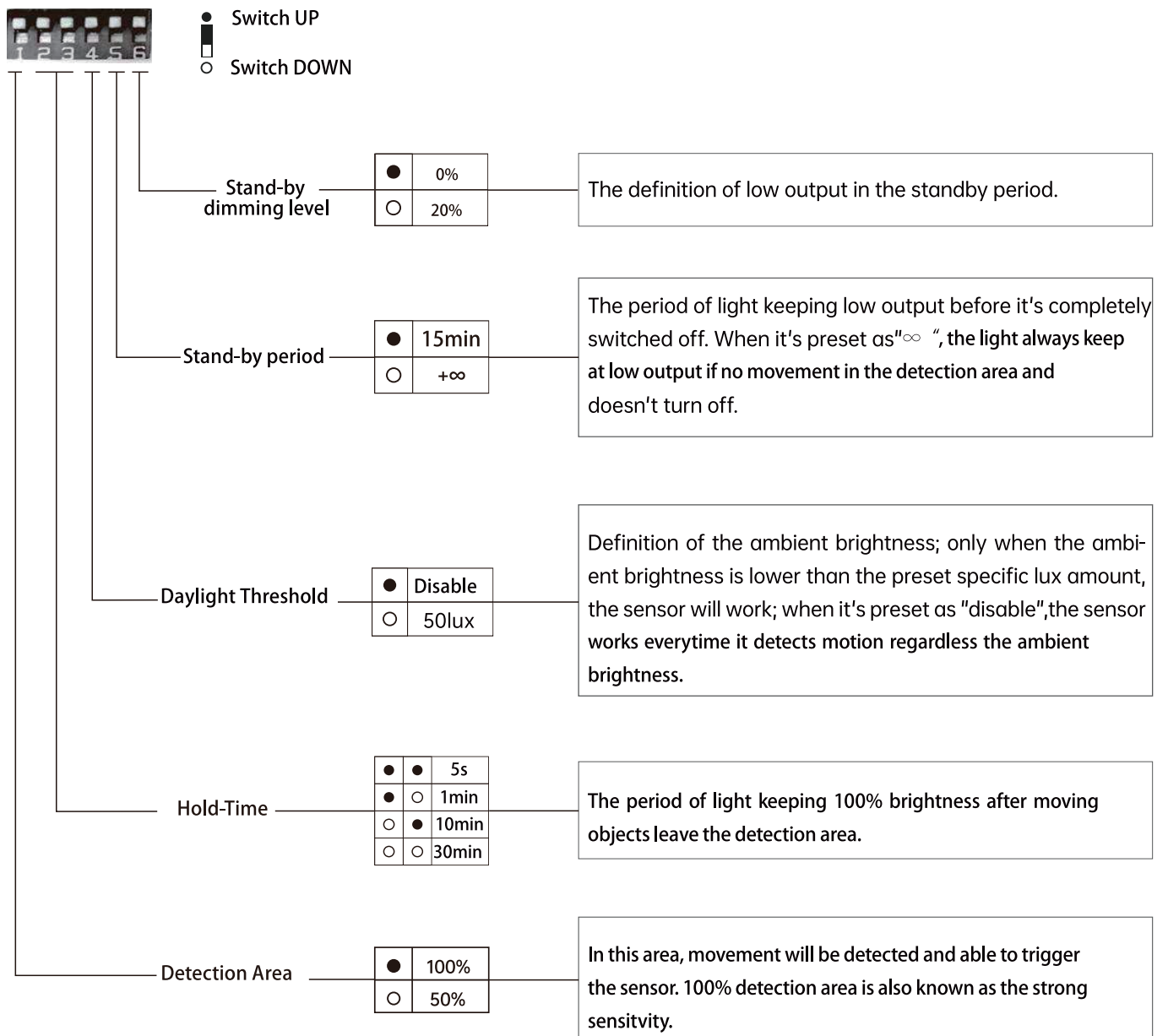
Sensor

Detection Patterns



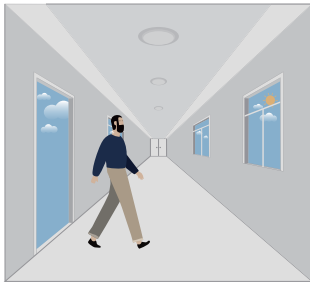
Highest mounting height is 4.5m
 This figure indicates the maximum distance at the highest mounting height with 100% sensitivity.

DIP Switch Setting

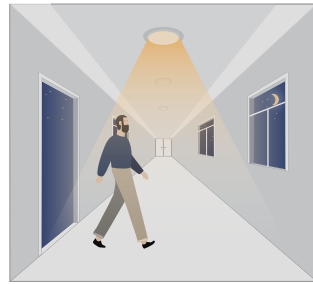


Performance

1. Automatically ON/OFF function



With sufficient daylight, even when motion detected, light remains OFF.



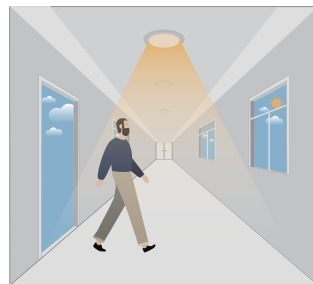
With insufficient daylight, the sensor turns light ON when motion gets detected.



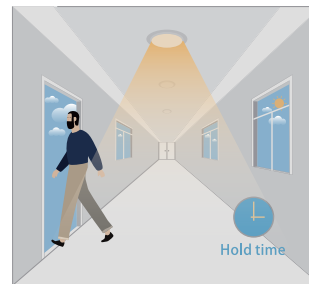
The sensor turns OFF light automatically after the holdtime when there's no motion detected.

2. Daylight Disable

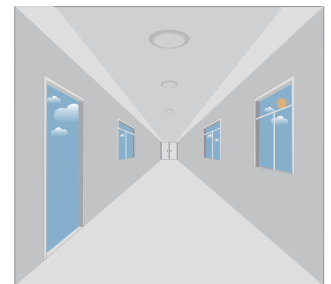
When daylight threshold is preset as "disable", the sensor turns light ON when motion gets detected, and OFF after hold-time.



The sensor turns light ON when motion gets detected.

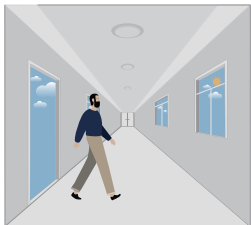


The sensor keeps light ON for holdtime period after motion leaves.

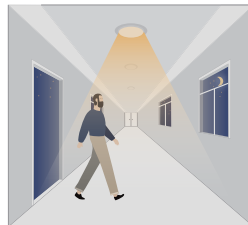


The sensor turns OFF light automatically after the holdtime.

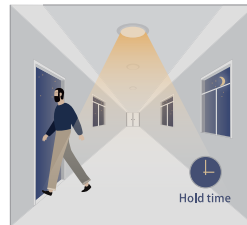
3. Corridor Function, Bi-level Dimmable



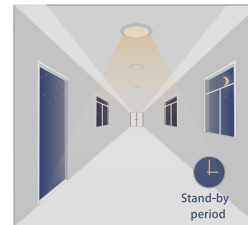
With sufficient daylight, the sensor keeps light OFF even motion gets detected.



With insufficient daylight, the sensor turns light ON when motion gets detected.



After there's no motion detected, the sensor keeps light ON 100% for holdtime.



After holdtime, sensor dims light to standby dimming level for standby period.



The sensor turns OFF light automatically after the standby period when there's no motion detected.

Application Environment

1. Suitable for indoor installation to avoid false triggering due to external factors such as rain, wind or tree swing.
2. Shall not be installed in the place with all four metal shelters and small space (such as galvanized-iron roof).
3. Shall note be mounted installation, so as to avoid false trigger caused by the lamp itself shaking.
4. Shall not be installed next to large operating machines such as ventilator/ceiling fan to avoid false triggering caused by machine vibration.
5. The sensor might be unwanted triggered in rooms that are small, or mostly filled with metal materials; please try to decrease sensitivity when it happens or contact us for support.



Caution: Any operation on LED module is forbidden while power-on.

Zur Vermeidung von Risiken müssen defekte Leitungen ausschließlich vom Hersteller,

Inverkehrbringer oder Fachmann ausgetauscht werden.

Achtung: In betrieb ist keine Arbeit am LED-Modul erlaubt.



For non-user replaceable light sources:

The light source contained in this luminaire shall only be replaced by the manufacturer or his service agent or a similar qualified person.

Für nicht vom Benutzer austauschbare Lichtquellen:

Die in dieser Leuchte enthaltene Lichtquelle darf nur vom Hersteller oder seinem Servicevertreter oder einer ähnlich qualifizierten Person ausgetauscht werden.



For use in environments where normal non-conductive/conductive dust accumulation may be expected, not for use in environments with expected high/unusual dust accumulation.

Zur Verwendung in Umgebungen, in denen mit normaler nichtleitender/leitender Staubansammlung zu rechnen ist, nicht zur Verwendung in Umgebungen mit zu erwartender hoher/ungewöhnlicher Staubansammlung.

